

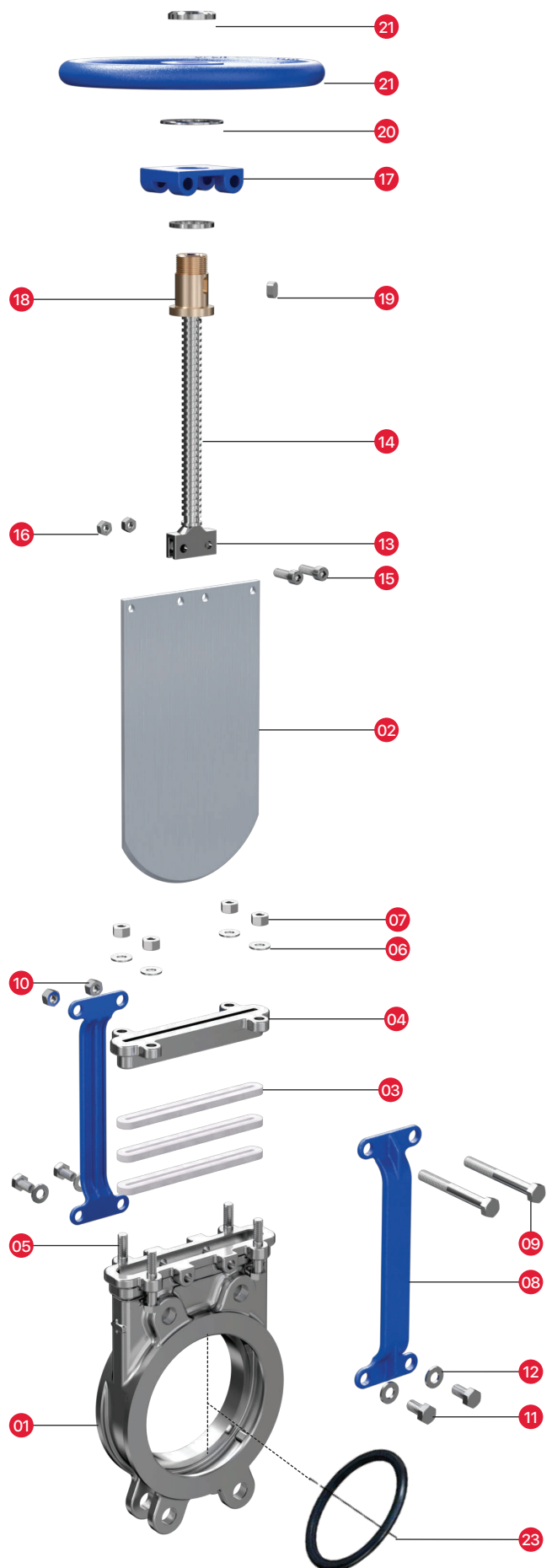
evo valvēs

Knife Edge Gate Valves

Materials of Construction








Material Specifications & Parts Callout

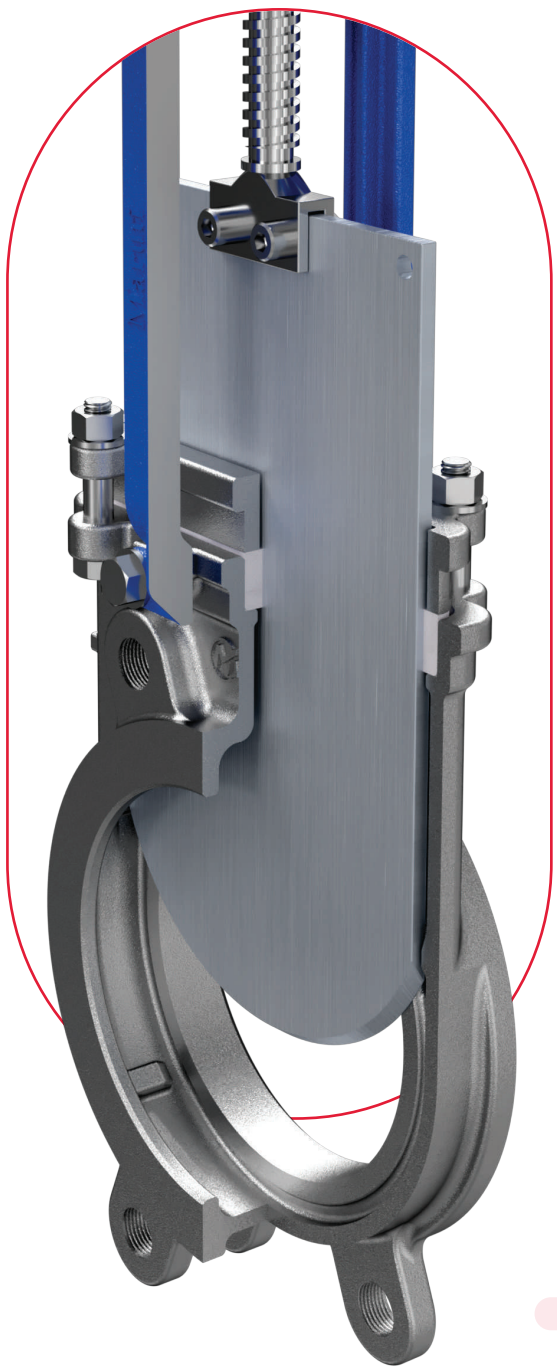
Item	Description	Material
1	Body	304 Stainless Steel
2	Gate	304 Stainless Steel
3	Gland Packing Set	PTFE / EPDM / Asbestos
4	Gland Follower	Stainless Steel / Mild Steel
5	Gland Bolt	Stainless Steel / High Tensile
6	Spring Washer	Stainless Steel / High Tensile
7	Gland Nut	Stainless Steel / High Tensile
8	Yoke	SS 410 Steel / Carbon Steel
9	Mounting Bolt (Top)	Stainless Steel / High Tensile
10	Mounting Nut (Top)	Stainless Steel / High Tensile
11	Mounting Bolt (Bottom)	Stainless Steel / High Tensile
12	Spring Washer	Stainless Steel / High Tensile
13	Gate Fork	304 Stainless Steel
14	Stem	304 Stainless Steel
15	Fork Bolt	Stainless Steel / High Tensile
16	Fork Nut	Stainless Steel / High Tensile
17	Block	Mild Steel
18	Yoke Bush	Forged Brass
19	Key	Mild Steel
20	Thrust Washer	Brass / Stainless Steel
21	Hand Wheel	Ductile Iron
22	Check Nut	Zinc Plated Carbon Steel
23	Seat 1	EPDM / Viton / PTFE



Gland Packing Options

Maximum Temperature Range

<p>Pure PTFE</p> <hr style="border-top: 1px dashed black;"/> <p>500°F 260°C</p>	
<p>PTFE impregnated Synthetic Fiber</p> <hr style="border-top: 1px dashed black;"/> <p>450°F 232°C</p>	
<p>PTFE w/Buna-N Quad Seal¹</p> <hr style="border-top: 1px dashed black;"/> <p>194°F 90°C</p>	
<p>PTFE w/Viton Quad Seal¹</p> <hr style="border-top: 1px dashed black;"/> <p>392°F 200°C</p>	
<p>PTFE w/EPDM Quad Seal¹</p> <hr style="border-top: 1px dashed black;"/> <p>248°F 120°C</p>	
<p>PTFE w/Copper Wiper²</p> <hr style="border-top: 1px dashed black;"/> <p>500°F 260°C</p>	
<p>Graphite</p> <hr style="border-top: 1px dashed black;"/> <p>1202°F 650°C</p>	



Knife Edge Gate Valve

MODEL - EVO-MS

The **EVO-MS** knife gate is an **UNI & BI-DIRECTIONAL** Wafer full lug type valve designed according to **MSS-SP-81** for industrial service applications. The design of the body & seat assures non-clogging shut off on suspended solids in industries such as:

- Pulp and Paper
- Water & Waste Water Treatment
- Power
- Food & Beverages
- Mining
- Steel
- Chemicals & Petrochemicals
- Oil & Gas
- Pharma
- Sugar

Sizes

DN 50/2" to DN 1200/48" (Larger Diameters on Request)

Working Pressure

02" / DN 50	to	10" / DN 250	150psi / 10 bar
12" / DN 300	to	16" / DN 400	90 psi / 6 bar
18" / DN 450			75 psi / 5 bar
20" / DN 500	to	24" / DN 600	60 psi / 4 bar

Standard Flange Connection

DIN PN 10 and ANSI B16.5 (class 150) and Table "E" & "D"
 Other Flanges Connections Available on Request
 DIN PN6 / DIN PN16 / DIN PN25 / ANSI125

Part	Material Of Construction
01 - Body	CF8 / CF8M / WCB / OTHER ON REQUEST
02 - Gate	AISI 304 / AISI 316 / OTHER ON REQUEST
03 - Seat	METAL TO METAL / SOFT SEAT
04 - Packing	PTFE IMPREG. SYNTH. FIBRE
05 - Gland Follower	CF8 / CF8M / WCB
06 - Stem	AISI 304 / AISI 316 / OTHER ON REQUEST
07 - Stem Nut	FORGED BRASS / EN-9 / D.I
08 - Yoke	MILD STEEL / S.S. 410
09 - Seat Ring	AISI 304 / AISI 316
10 - Operation	MANUAL
11 - Fastners	HIGH-TENSILE (ZINC COATED)
12 - Hand Wheel	S.G. IRON
13 - Stem Protector	MILD STEEL (ZINC PLATED)



*Reserves The Right To Change Specifications Without Notice.

Knife Edge Gate Valve

MODEL - EVO-MS2

The **EVO-MS2** Stainless Steel Slurry & Plup Knife Gate Valve is An **UNI & BI-DIRECTIONAL** for Industrial Service Applications This Body & Seat Assures Non-clogging Shut Off On Suspended Solids In Industries Such As :

- Pulp & Paper
- Food And Beverages
- Water & Wastewater Treatment
- Bulk Handling
- Chemicals & Petrochemicals
- Mining

Working Pressure

02" / DN 50	to	10" / DN 250	150psi / 10 bar
12" / DN 300	to	16" / DN 400	90 psi / 6 bar
18" / DN 450			75 psi / 5 bar
20" / DN 500	to	24" / DN 600	60 psi / 4 bar

Sizes

DN 50/2" to DN 500/20"

Standard Flange Connection

DIN PN 10 and ANSI B16.5 (class 150) and Table "E" & "D"
Other Flanges Connections Available on Request
DIN PN6 / DIN PN16 / DIN PN25 / ANSI125

Part	Material Of Construction
01 - Body	CF8 / CF8M / WCB / OTHER ON REQUEST
02 - Gate	AISI 304 / AISI 316 / OTHER ON REQUEST
03 - Seat	METAL TO METAL / SOFT SEAT
04 - Packing	PTFE IMPREG. SYNTH. FIBRE
05 - Gland Follower	CF8 / CF8M / WCB
06 - Stem	AISI 304 / AISI 316 / OTHER ON REQUEST
07 - Stem Nut	FORGED BRASS / EN-9 / D.I
08 - Yoke	MILD STEEL / S.S. 410
09 - Seat Ring	AISI 304 / AISI 316
10 - Operation	MANUAL
11 - Fastners	HIGH-TENSILE (ZINC COATED)
12 - Hand Wheel	S.G. IRON
13 - Stem Protector	MILD STEEL (ZINC PLATED)



*Reserves The Right To Change Specifications Without Notice.

Knife Edge Gate Valve

MODEL - EVO-MD

The **EVO-MD** Knife Edge Gate Valves is An **UNI & BI-DIR**. Wafer semi Lug Type Valve Designed According To **MSS-SP-81** For Industrial Service Applications. The Design Of The Body & Seat Assures Non-clogging Shut Off On Suspended Solids In Industries Such As:

- Pulp and Paper
- Food & Beverages
- Water & Waste water Treatment
- Bulk Handling
- Chemicals & Petrochemicals
- Mining

Working Pressure

02" / DN 50	to	10" / DN 250	150psi / 10 bar
12" / DN 300	to	16" / DN 400	90 psi / 6 bar
18" / DN 450			75 psi / 5 bar
20" / DN 500	to	24" / DN 600	60 psi / 4 bar
28" / DN 700	to	48" / DN 1200	30 psi / 2 bar

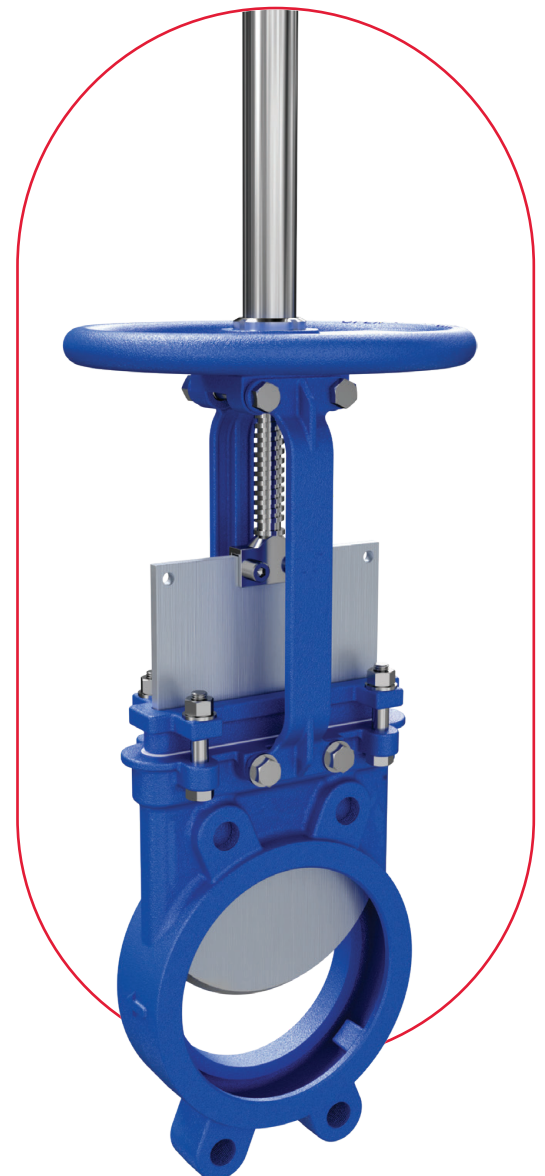
Sizes

DN 50/2" to DN 1100/44"

Standard Flange Connection

DIN PN 10 and ANSI B16.5 (class 150) and Table "E" & "D"
 Other Flanges Connections Available on Request
 DIN PN6 / DIN PN16 / DIN PN25 / ANSI125

Part	Material Of Construction
01 - Body	CF8 / CF8M / WCB / OTHER ON REQUEST
02 - Gate	AISI 304 / AISI 316 / OTHER ON REQUEST
03 - Seat	METAL TO METAL / SOFT SEAT
04 - Packing	PTFE IMPREG. SYNTH. FIBRE
05 - Gland Follower	CF8 / CF8M / WCB
06 - Stem	AISI 304 / AISI 316 / OTHER ON REQUEST
07 - Stem Nut	FORGED BRASS / EN-9 / D.I
08 - Yoke	MILD STEEL / S.S. 410
09 - Seat Ring	AISI 304 / AISI 316
10 - Operation	MANUAL
11 - Fastners	HIGH-TENSILE (ZINC COATED)
12 - Hand Wheel	S.G. IRON
13 - Stem Protector	MILD STEEL (ZINC PLATED)



*Reserves The Right To Change Specifications Without Notice.

Heavy Duty Knife Edge Gate Valve

MODEL - EVO-MG

The **EVO-MG** Model Knife Gate Is An **UNI & BI-DIRECTIONAL** Lug Type Valve Designed According To **MSS-SP-81** For Industrial Service Applications. The Design Of The Body & Seat Assures Non-clogging Shut Off On Suspended Solids In Industries Such As:

- Pulp and Paper
- Power
- Water & Waste water Treatment
- Food & Beverages
- Bulk Handling
- Chemicals & Petrochemicals
- Mining

Working Pressure

02" / DN 50	to	10" / DN 250	150psi / 10 bar
12" / DN 300	to	16" / DN 400	90 psi / 6 bar
18" / DN 450			75 psi / 5 bar
20" / DN 500	to	24" / DN 600	60 psi / 4 bar
28" / DN 700	to	48" / DN 1200	30 psi / 2 bar

Sizes

DN 50/2" to DN 1100/44"

Standard Flange Connection

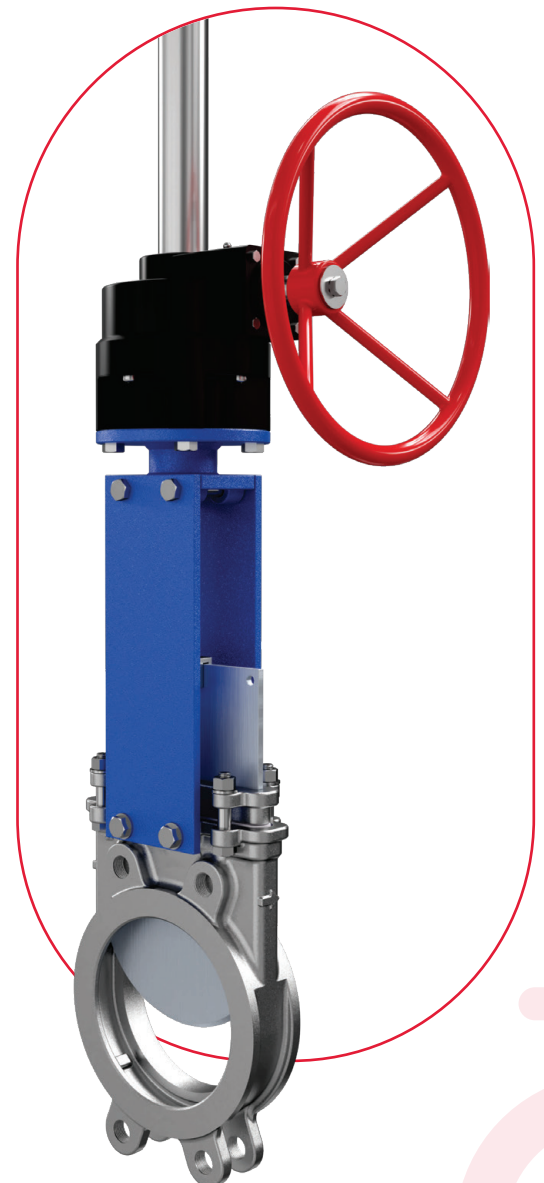
DIN PN 10 and ANSI B16.5 (class 150) and Table "E" & "D"

Other Flanges Connections Available on Request

DIN PN6 / DIN PN16 / DIN PN25 / ANSI125

Part	Material Of Construction
01 - Body	DUCTILE IRON / CAST IRON / GGG40 / GL500
02 - Gate	AISI 304 / AISI 316 / OTHER ON REQUEST
03 - Seat	METAL TO METAL / SOFT SEAT
04 - Packing	PTFE IMPREG. SYNTH. FIBRE
05 - Gland Follower	CF8 / CF8M,WCB
06 - Stem	AISI 304 / AISI 316 / OTHER ON REQUEST
07 - Stem Nut	MILD STEEL
08 - Yoke	MILD STEEL
09 - Seat Ring	AISI 304 / AISI 316
10 - Operation	BEVEL GEAR (MULTI TURN)
11 - Fastners	HIGH-TENSILE (ZINC COATED)
12 - Hand Wheel	MILD STEEL
13 - Stem Protector	MILD STEEL (ZINC PLATED)

*Reserves The Right To Change Specifications Without Notice.



Knife Edge Gate Valve

MODEL - EVO-MP2

The **EVO-MP2** Model Pneumatic Knife Gate Valves Is An **UNI & BI-DIRECTIONAL** Lug Type Valve Designed According To **MSS-SP-81** For Industrial Service Applications. The Design Of The Body & Seat Assures Non-clogging Shut Off On Suspended Solids In Industries Such As:

- Pulp and Paper
- Food & Beverages
- Water & Waste water Treatment
- Bulk Handling
- Chemicals & Petrochemicals
- Mining

Working Pressure

02" / DN 50 to 10" / DN 250	150psi / 10 bar
12" / DN 300 to 16" / DN 400	90 psi / 6 bar
18" / DN 450	75 psi / 5 bar
20" / DN 500 to 24" / DN 600	60 psi / 4 bar
28" / DN 700 to 48" / DN 1200	30 psi / 2 bar

Sizes

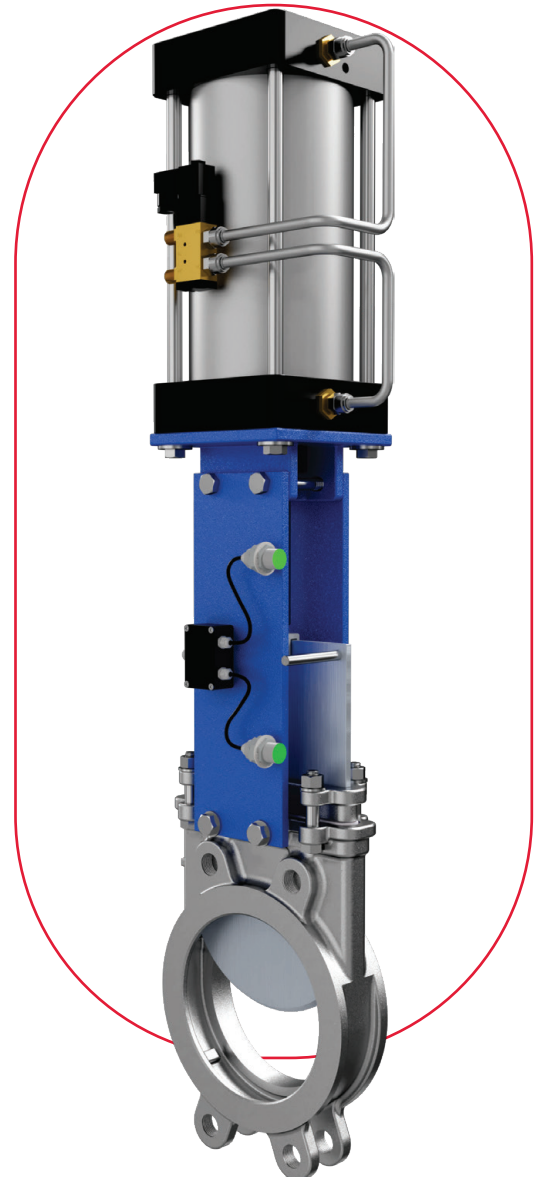
DN 50/2" to DN 1000/40"

Standard Flange Connection

DIN PN 10 and ANSI B16.5 (class 150) and Table "E" & "D"
 Other Flanges Connections Available on Request
 DIN PN6 / DIN PN16 / DIN PN25 / ANSI125

Part	Material Of Construction
01 - Body	WCB / CF8 / CF8M / OTHER ON REQUEST
02 - Gate	AISI 304 / AISI 316 / OTHER ON REQUEST
03 - Seat	METAL TO METAL / SOFT SEAT
04 - Packing	PTFE IMPREG. SYNTH. FIBRE
05 - Gland Follower	CF8 / CF8M / WCB
06 - Solenoid Valve	5/2 & 5/3 WAY - SINGLE OR DOUBLE COIL
07 - Limit Switch	MECHANICAL / PROXIMITY
08 - Yoke	MILD STEEL
09 - Seat Ring	AISI 304 / AISI 316 / INTEGRAL
10 - Operation	PNEUMATIC OPERATED
11 - Fastners	HIGH-TENSILE (ZINC COATED)
12 - Cylinder Type	DOUBLE ACTING
13 - Cylinder Barrel	ALUMINUM / STAINLESS STEEL

*Reserves The Right To Change Specifications Without Notice.



Knife Edge Gate Valve

MODEL - EVO-MDP

The **EVO-MDP** Model Pneumatic Knife Gate Valves is An **UNI & BI-DIRECTIONAL** Lug Type Valve Designed According To **MSS-SP-81** For Industrial Service Applications. The Design of The Body & Seat Assures Non-Clogging Shut Off On Suspended Solids in Industries Such As:

- Pulp and Paper
- Food & Beverages
- Water & Waste water Treatment
- Bulk Handling
- Chemicals & Petrochemicals
- Mining

Working Pressure

02" / DN 50 to 10" / DN 250	150psi / 10 bar
12" / DN 300 to 16" / DN 400	90 psi / 6 bar
18" / DN 450	75 psi / 5 bar
20" / DN 500 to 24" / DN 600	60 psi / 4 bar
28" / DN 700 to 48" / DN 1200	30 psi / 2 bar

Sizes

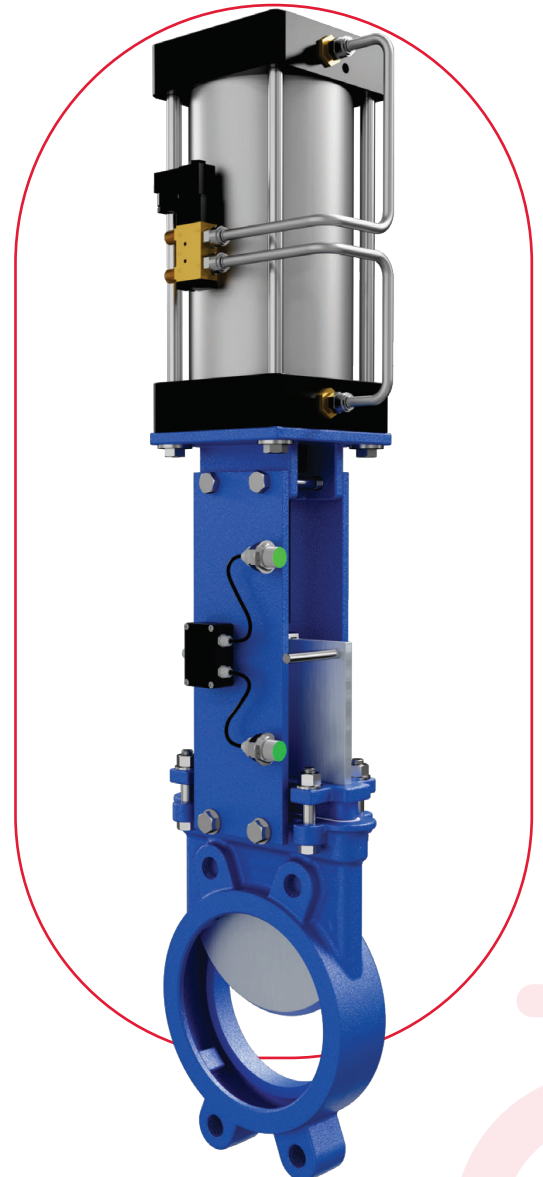
DN 50/2" to DN 1000/40"

Standard Flange Connection

DIN PN 10 and ANSI B16.5 (class 150) and Table "E" & "D"
Other Flanges Connections Available on Request
DIN PN6 / DIN PN16 / DIN PN25 / ANSI125

Part	Material Of Construction
01 - Body	DUCTILE IRON / CAST IRON / GGG40
02 - Gate	AISI 304 / AISI 316 / OTHER ON REQUEST
03 - Seat	METAL TO METAL / SOFT SEAT
04 - Packing	PTFE IMPREG. SYNTH. FIBRE
05 - Gland Follower	CF8 / CF8M / WCB
06 - Solenoid Valve	5/2 & 5/3 WAY - SINGLE OR DOUBLE COIL
07 - Limit Switch	MECHANICAL / PROXIMITY
08 - Yoke	MILD STEEL
09 - Seat Ring	AISI 304 / AISI 316 / INTEGRAL
10 - Operation	PNEUMATIC OPERATED
11 - Fastners	HIGH-TENSILE (ZINC COATED)
12 - Cylinder Type	DOUBLE ACTING
13 - Cylinder Barrel	ALUMINUM / STAINLESS STEEL

*Reserves The Right To Change Specifications Without Notice.



Knife Edge Gate Valve

MODEL - EVO-ME

The **EVO-ME MODEL / ELECTRIC ACTUATOR** Knife Gate Is An **UNI & BI-DIRECTIONAL** Lug Type Valve Designed According To **MSS-SP-81** For Industrial Service Application. The Design Of The Body And Seat Assures Non-clogging Shut Off On Suspended Solids In Industries Such As :

- Pulp and Paper
- Food & Beverages
- Water & Waste water Treatment
- Bulk Handling
- Chemicals & Petrochemicals
- Mining
- Steel

Working Pressure

02" / DN 50	to	10" / DN 250	150psi / 10 bar
12" / DN 300	to	16" / DN 400	90 psi / 6 bar
18" / DN 450			75 psi / 5 bar
20" / DN 500	to	24" / DN 600	60 psi / 4 bar
28" / DN 700	to	48" / DN 1200	30 psi / 2 bar

Sizes

DN 50/2" to DN 1600/64"

Standard Flange Connection

DIN PN 10 and ANSI B16.5 (class 150) and Table "E" & "D"
 Other Flanges Connections Available on Request
 DIN PN6 / DIN PN16 / DIN PN25 / ANSI125

Part	Material Of Construction
01 - Body	CF8 / CF8M / WCB / DUCTILE IRON
02 - Gate	AISI 304 / AISI 316 / OTHER ON REQUEST
03 - Seat	METAL TO METAL / SOFT SEAT
04 - Packing	PTFE IMPREG. SYNTH. FIBRE
05 - Gland Follower	CF8 / CF8M / WCB
06 - Stem	AISI 304 / AISI 316
07 - Stem Nut	MILD STEEL
08 - Yoke	MILD STEEL
09 - Seat Ring	AISI 304 / AISI 316 / INTEGRAL
10 - Operation	ELECTRIC ACTUATOR
11 - Fastners	HIGH-TENSILE (ZINC COATED)

*Reserves The Right To Change Specifications Without Notice.



Through Conduit Knife Gate Valve

MODEL - EVO-MLG

The **EVO-MLG MODEL** Knife Edge Gate is **BI-DIRECTIONAL** Wafer Lug Type Valve Designed According To **MSS-SP-81** For Industrial Service Applications. The Design Of The Body And Seat Assures Non-clogging Shut Off On Suspended Solids In Industries Such As:

- Pulp and Paper
- Power
- Water & Waste water Treatment
- Bulk Handling
- Chemicals & Petrochemicals
- Mining

Working Pressure

02" / DN 50 to 10" / DN 250
 12" / DN 300 to 16" / DN 400
 18" / DN 450
 20" / DN 500

150psi / 10 bar
 90 psi / 6 bar
 75 psi / 5 bar
 60 psi / 4 bar

Sizes

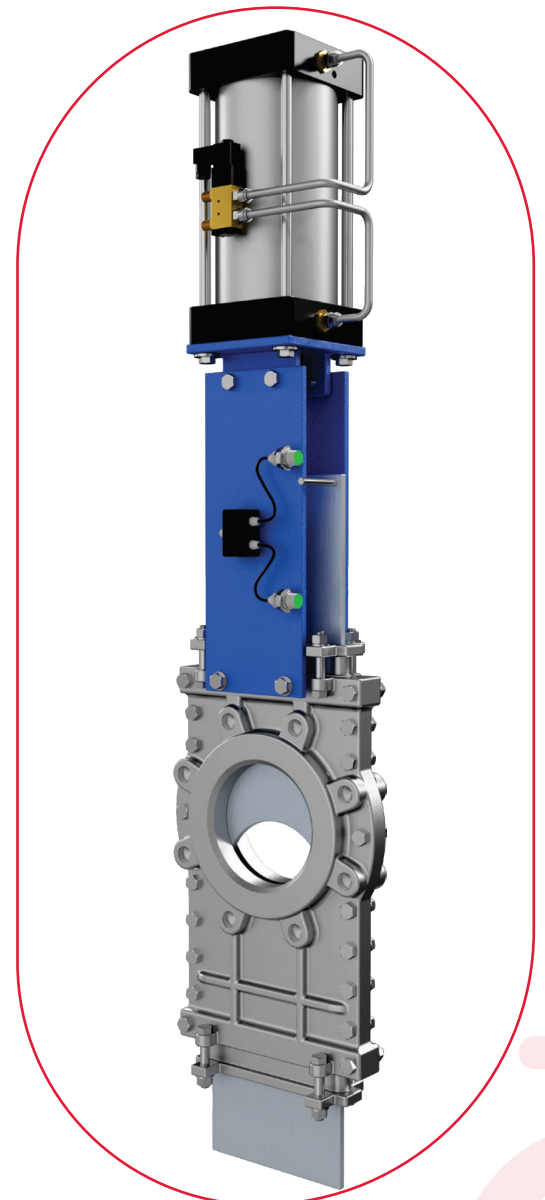
DN 50/2" to DN 500/20"

Standard Flange Connection

DIN PN 10 and ANSI B16.5 (class 150) and Table "E" & "D"
 Other Flanges Connections Available on Request
 DIN PN6 / DIN PN16 / DIN PN25 / ANSI125

Part	Material Of Construction
01 - Body	DUCTILE IRON / CAST IRON / GGG40
02 - Gate	AISI 304 / AISI 316 / OTHER ON REQUEST
03 - Seat	METAL TO METAL / SOFT SEAT
04 - Packing	PTFE IMPREG. SYNTH. FIBRE
05 - Gland Follower	CF8 / CF8M / WCB
06 - Solenoid Valve	5/2 & 5/3 WAY - SINGLE OR DOUBLE COIL
07 - Limit Switch	MECHANICAL / PROXIMITY
08 - Yoke	MILD STEEL
09 - Seat Ring	AISI 304 / AISI 316 / INTEGRAL
10 - Operation	PNEUMATIC OPERATED
11 - Fastners	HIGH-TENSILE (ZINC COATED)
12 - Cylinder Type	DOUBLE ACTING
13 - Cylinder Barrel	ALUMINUM / STAINLESS STEEL

*Reserves The Right To Change Specifications Without Notice.



Bi-Directional Knife Edge Gate Valve

MODEL - EVO-BD

The Knife Gate Is An **BI-DIRECTIONAL** Semi Lug Type & Flange Type Valve Designed According To **MSS-SP-81** For Industrial Service Applications. The Design Of The Body & Seat Assures Non-clogging Shut Off On Suspended Solids In Industries Such As:

- Pulp and Paper
- Water & Waste water Treatment
- Power
- Mining
- Chemicals & Petrochemicals
- Food & Beverages
- Steel
- Pharma
- Cement

Working Pressure

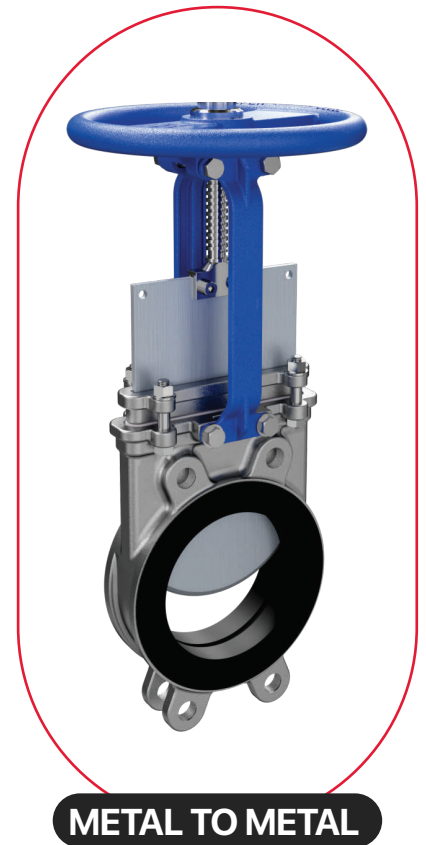
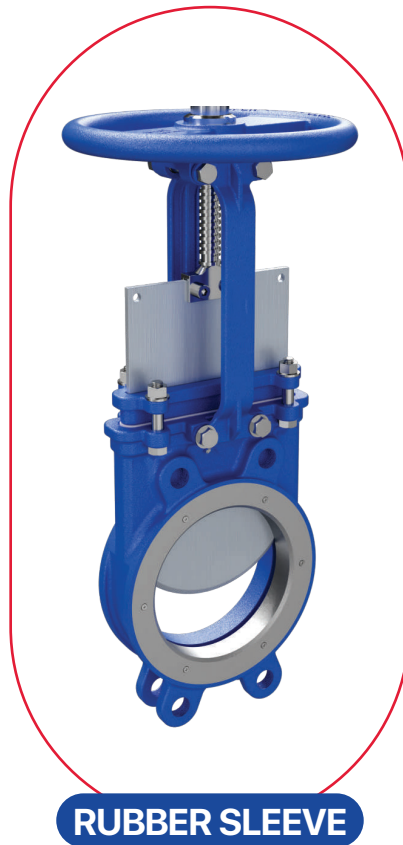
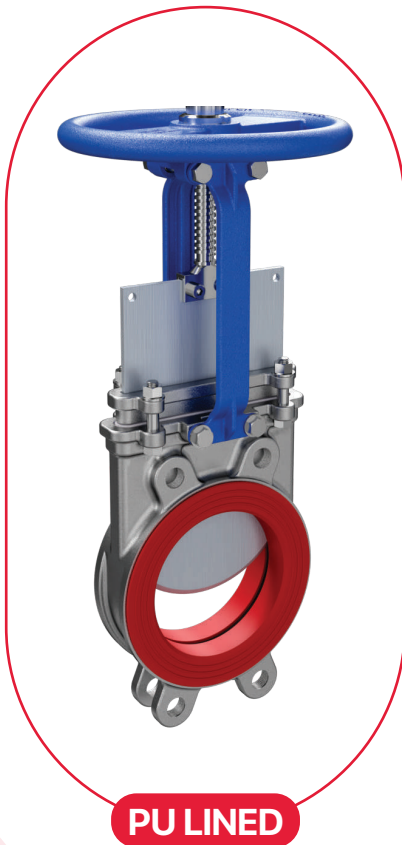
02" / DN 50 to 10" / DN 250	150psi / 10 bar
12" / DN 300 to 16" / DN 400	90 psi / 6 bar
18" / DN 450	75 psi / 5 bar

Sizes

DN 50/2" to DN 400/16" (Larger Diameters On Request)

Standard Flange Connection

DIN PN 10 and ANSI B16.5 (class 150) and Table "E"
Other Flanges Connections Available on Request
DIN PN6 / DIN PN16 / DIN PN25 / ANSI125

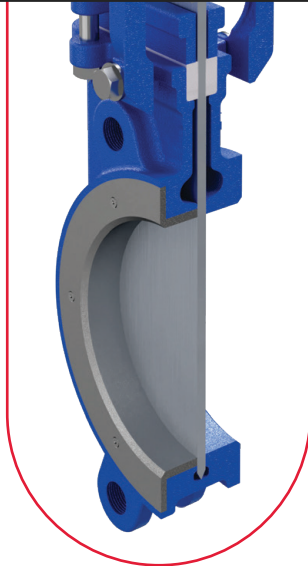


Option Of Seat

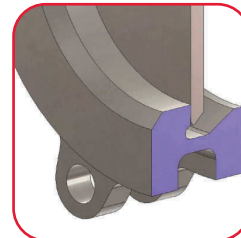
Uni-directional Soft Seat



Bi-directional Metal Seat



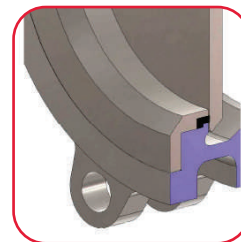
Seat Types



Metal

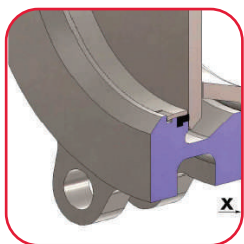
For Applications With:

- ✓ High Temperature
- ✓ High Density Media Application
- ✓ When Full Tightness Is Not Required



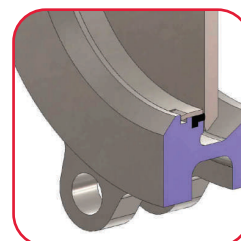
**Resilient,
Type "B"**

- ✓ Temperature Limitations According To The Selected Seat Material. Review The Above Chart Or Contact Our Technical Department For More Information.
- ✓ Replaceable & Reinforced Seat Ring Available In Different Materials Such As: AISI 316 (1.4401), CA15, Ni-Hard, Etc.



Deflection Cone "C"

- ✓ Deflects The Media Away From Any Valve Internal Exposed Parts (Gate, Seat,...)
- ✓ Material: AISI 316 (1.4401), CA15, Ni-Hard, PU, Etc.
- ✓ Face-to-face Dimension Increases:
DN 50 To DN 250 X = 9mm
DN 300 To DN 600 X = 12mm
Larger Diameters On Request



**Resilient,
Type "A"**

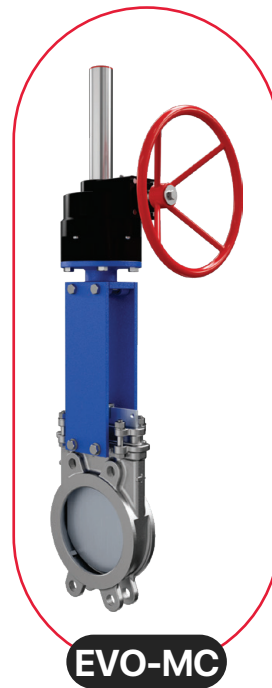
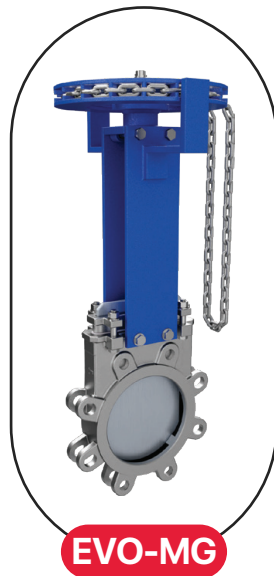
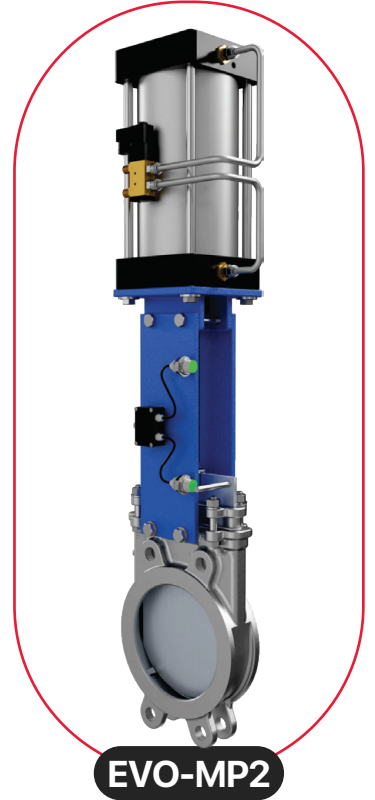
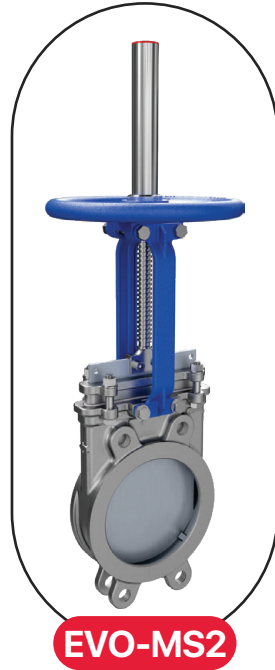
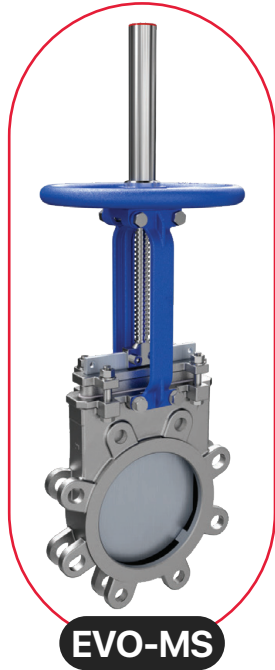
- ✓ Standard Resilient Seat.
- ✓ Temperature Limitations According To Seat Material Selected. Review The Above Chart Or Contact Our Technical Department For More Information.
- ✓ Replaceable Seat Retainer Ring

Seat / Seals

Material	Max.T (°C)	Applications
Metal/Metal	>250	High Temp. / Low Tightness
EPDM (E)	120	Acids And Non Mineral Oils
Nitrite (N)	120	Resistance To Petroleum Products
Viton (V)	200	Chemical Service /high Temp.
Silicone (S)	250	Food Service / High Temp.
PTFE (T)	250	Corrosion Resistance

More Details And Other Materials Upon Request

Range Of Design

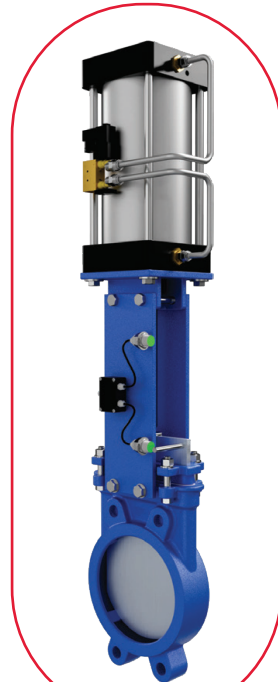




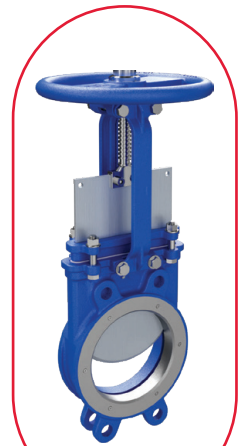
EVO-MOR



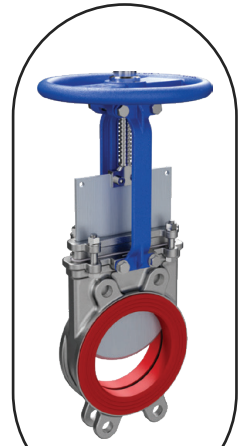
EVO-ML



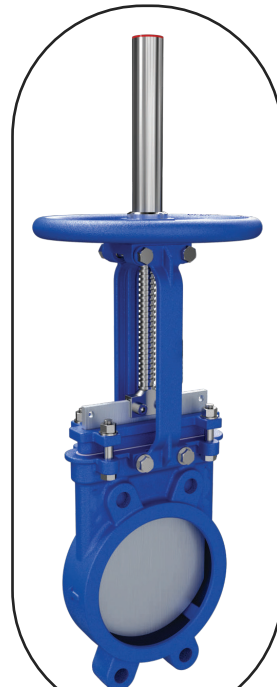
EVO-MDP



EVO-BDM



EVO-BDP



EVO-DM





EVO-BDR




CONTACT US

EVOLUTION ENGITECH PVT LTD

 +91-88118 86868, +91-99090 05566

 info@evovalves.com, sales@evovalves.com  www.evovalves.com

 Plot No. 10, Prince Industrial Hub, Kuha, Daskroi, Ahmedabad - 382433, Gujarat (India)